

# New Scientist

WEEKLY 20 July 2024

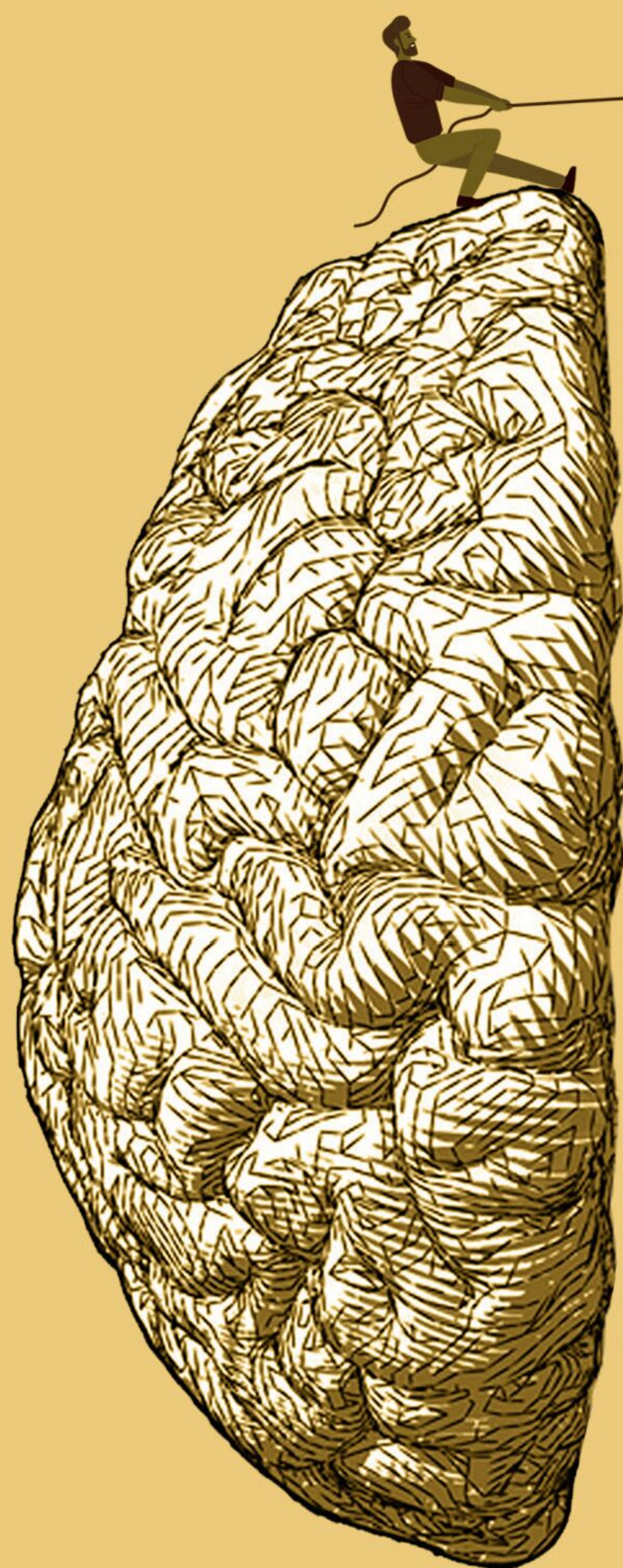
THE PLAN TO BUILD  
A TELESCOPE BIGGER  
THAN EARTH

LIFE'S OLDEST  
ANCESTOR JUST  
GOT OLDER

CAN WE PREVENT  
GPS ATTACKS  
ON PLANES?

## YOUR MIDLIFE BRAIN

Why middle age is  
the perfect time to  
take control of your  
cognitive health



**PLUS** URINE-RECYCLING SPACESUIT  
**NAOMI KLEIN ON CONSPIRACY THEORIES**  
HOW TO MAKE A CLOCK FROM RANDOMNESS  
**THE BENEFITS OF DENISOVAN DNA**

No3500 £6.95 CAN\$9.99





## Moon cave

Deep pit might be an entrance to lunar underworld **p13**

## Opioid treatment

Implant could prevent dangerous overdoses **p13**

## Prehistoric plague

Outbreak may have killed Neolithic Europeans **p18**

## CO<sub>2</sub>-filled dome

Giant gasholder could store energy from renewables **p19**

## Death-defying swim

Lions cross 1.5-km channel filled with crocodiles **p19**



NASA, ESA, CSA, STSCI

## Astronomy

### Dance of a cosmic penguin

In space, no one can hear you waddle. NASA has used the James Webb Space Telescope to image a pair of galaxies. Known together as Arp 142, they are nicknamed the Penguin (the large orange structure) and the Egg (the white blob to its left). The Penguin was originally a spiral galaxy, but its shape has been distorted by interactions with the Egg.